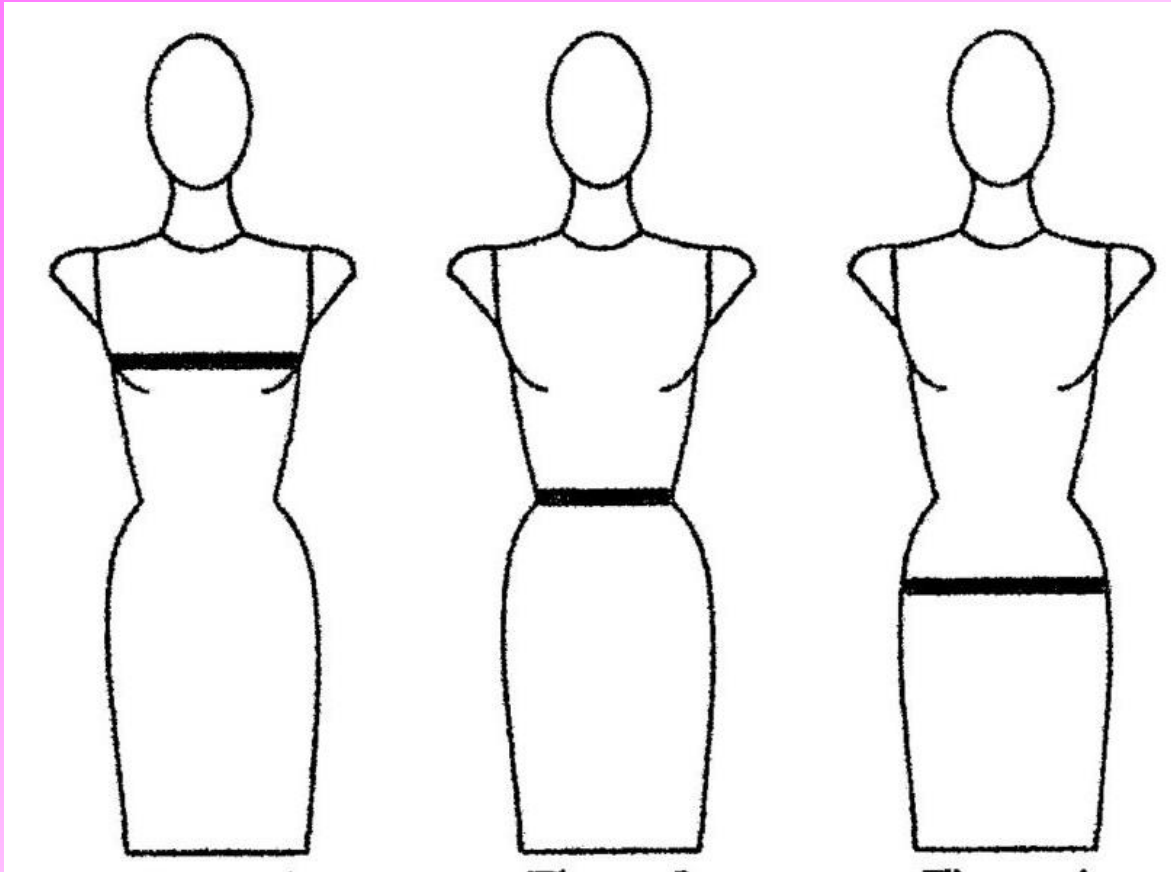
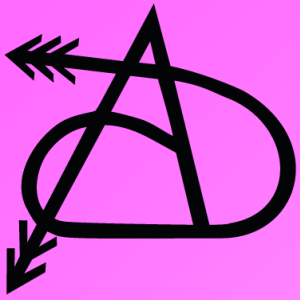


# COME PRENDERE LE MISURE



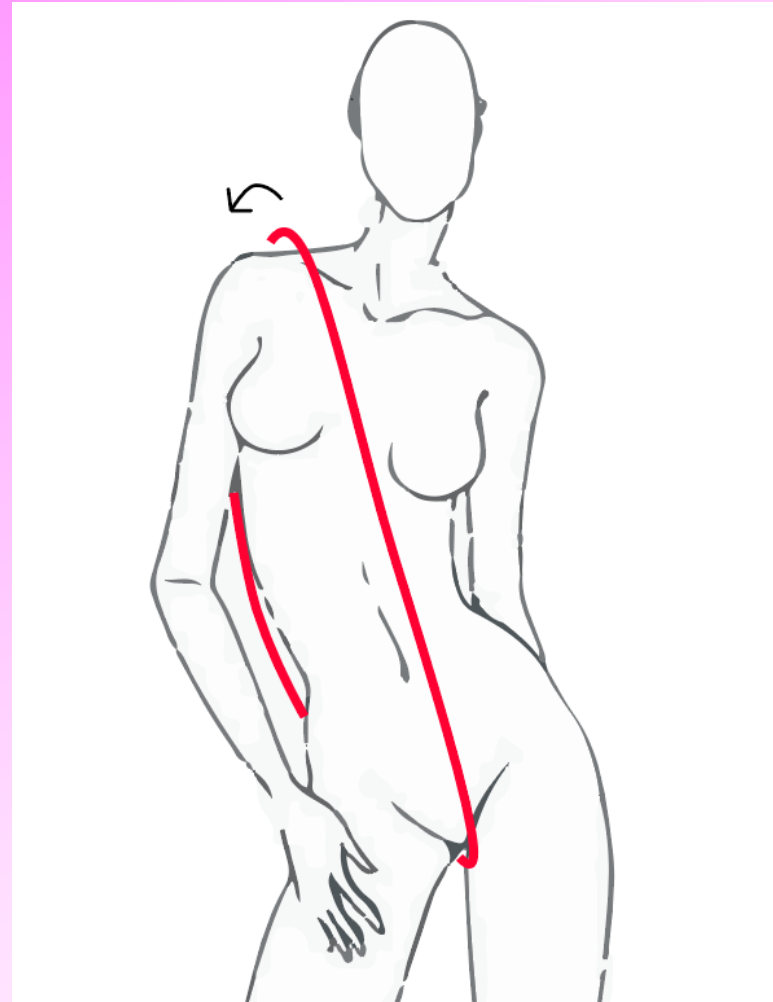
Circonferenza  
seno

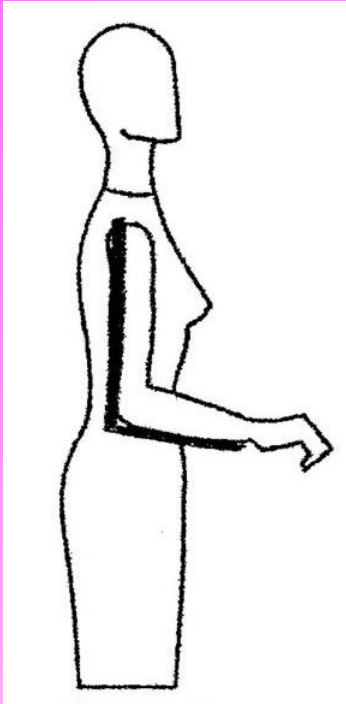
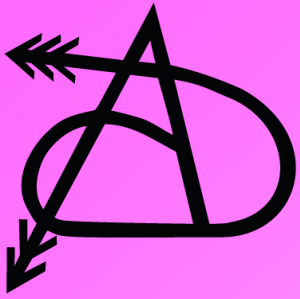
Circonferenza  
vita

Circonferenza  
fianchi

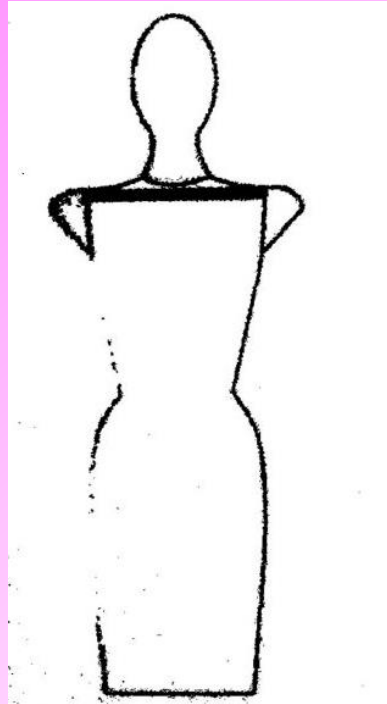


Giro uovo:  
posizionare lo 0 sulla  
spalla, passare sotto il  
cavallo e ritornare  
alla spalla passando  
dal retro del busto.

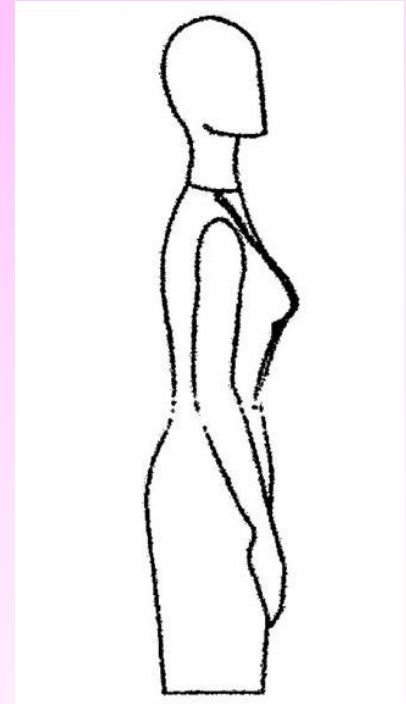




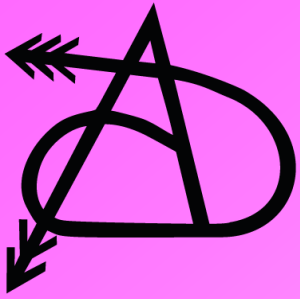
Lunghezza  
manica



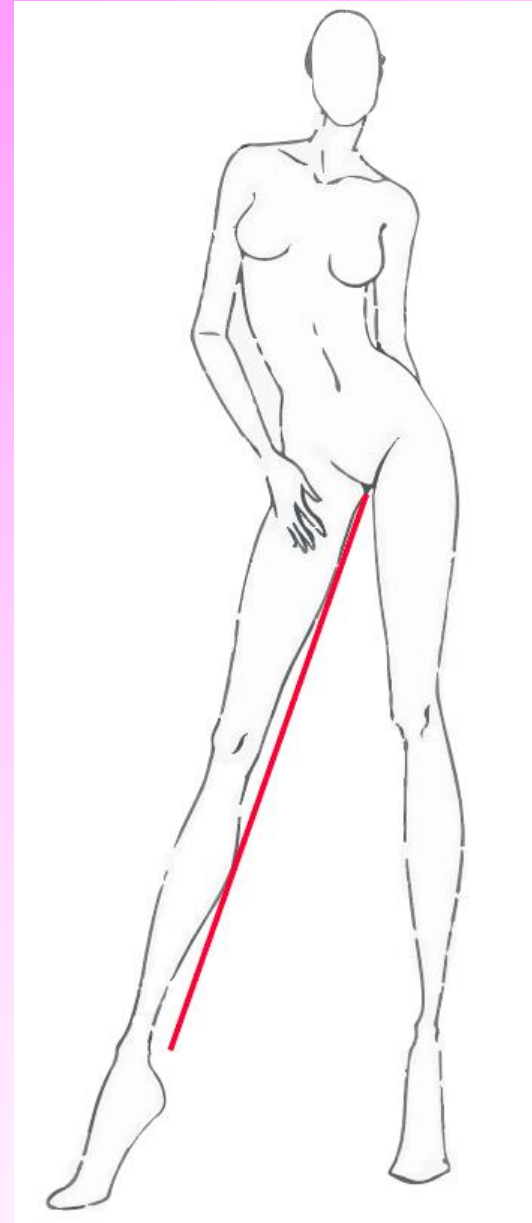
Larghezza  
spalle (dietro)

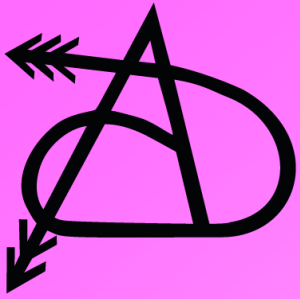


Lunghezza  
spalla/vita (davanti)



Lunghezza interno  
coscia:  
misurare dal cavallo al  
malleolo





Circonferenza collo

